



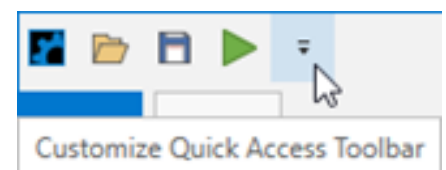
Ribbon UI

The traditional menus and toolbars have been replaced with a fluent Ribbon bar like the one you find in Microsoft Office applications. The new Ribbon makes it easier to access the various modules and features within the application and better facilitate touch screen and high-resolution devices.



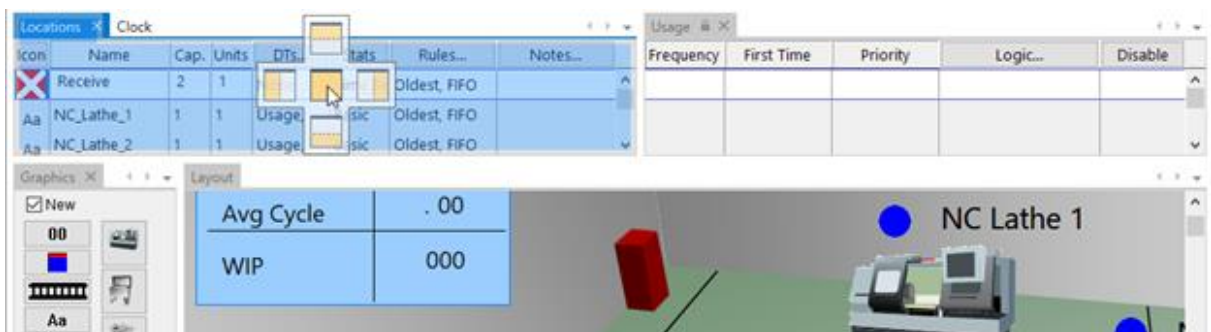
Quick Access Toolbar

Add highly used ribbon buttons to the Quick Access toolbar (located in the upper left corner of the application) for fast and easy access to the program functionality they provide.



Docking Windows

Windows are now docked within the new workspace interface, which means that when you adjust the size of one window, the others automatically resize accordingly. Say goodbye to overlapping windows. You can also stack windows on top of each other and quickly access them from their respective tab thus saving valuable view space.

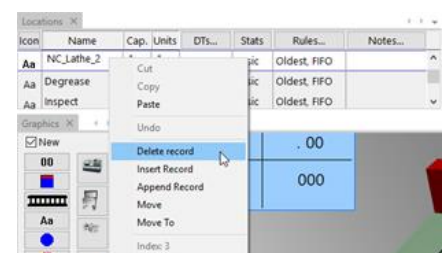


Window Persistence

Tired of leaving a module only to return and have to reopen its sub-windows? In this new release, all windows persist! If you leave one module for another (e.g. to create a new global variable), when you return to that module, all its previously open windows will be reopened.

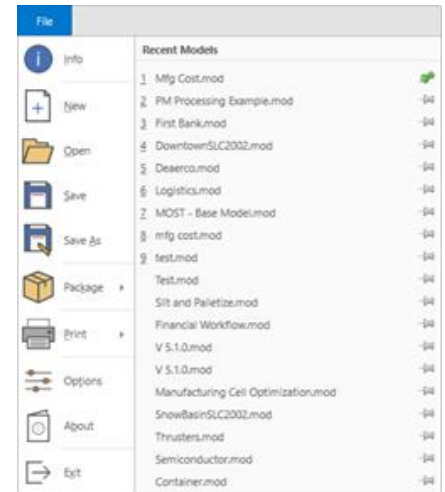
Right-Click Context Menus

Context menus are available in every table and accessible by right-clicking in any field within that table. For example, you will be able to quickly delete, insert or move a record with a simple right-click of the mouse. The right-click context menus in Background graphics are improved and provide new access to editing other modeling elements such as locations and variables.



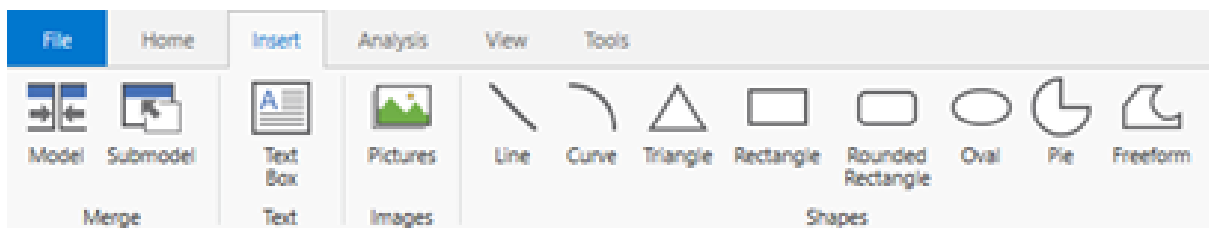
Recent Model List

The list of recently opened models in the File application menu has been expanded from five to up to 19. Pin your favorite model files to the top of the list and hover over any model name to reveal the full path to the model.



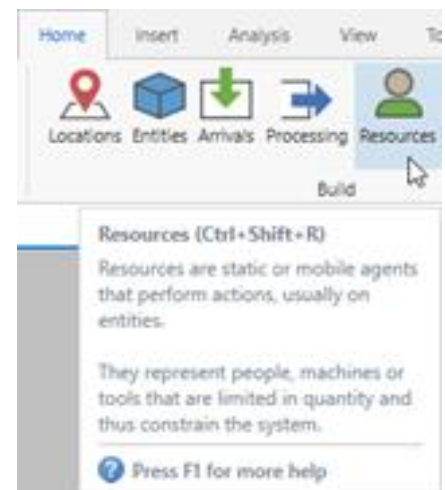
Single Background Graphics Mode

No more discussion or decision on whether to go to **Front of Grid** or **Behind Grid** mode when creating background graphics. You simply just go to **Background Graphics** for editing images. Create shapes, add text and import pictures through the new **Insert** ribbon.



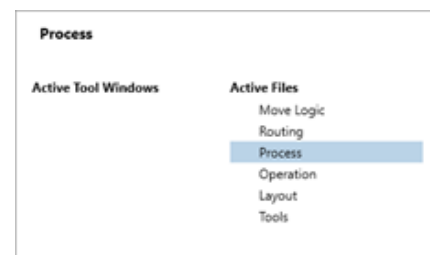
Enhancements

- New and updated hotkeys for fast access to key modules and application features.
- Super Tooltips appear revealing hotkeys and help snippets when hovering over ribbon buttons, and selecting F1 opens online context help for the given button.





- Variable labels can be quickly created using the hotkey Ctrl+T and then clicking on the Layout.
- SimRunner Input Factors have been expanded beyond the previous limit of 500.
- Simultaneously run an optimization in SimRunner and continue editing your model.
- Conveniently cycle through all open windows using Ctrl+Tab.



- Name-Index Numbers are displayed in right-click context menus.
- Selecting Continuous Trace now opens a window and begins tracing (like Step Trace Events).
- When exporting your model to a text file, you are now prompted whether or not to open it right away.

Fixes

- In some cases, a location was not able to go down for a Usage downtime if an earlier Usage downtime had preempted one of the location's previous Shift downtimes at some point.

Includes Output Viewer 4.5.3.1260 containing the following fixes:

- "Failed to Export" error appeared when attempting to export Time Series data to Excel.